

# Building Connections through Art



**BOUSTEAD**<sup>®</sup>  
Projects

---

## Building Connections through Art

---

Building Connections through Art is a collaboration between Boustead Projects and Singapore Association for Mental Health (SAMH), through the North East Community Development Council (NECDC) – Boustead Projects' CSR partner. The Project aims to support the artistic practice of SAMH beneficiaries through the commissioning of five art pieces featuring five iconic buildings built and/or developed by Boustead Projects. A total of S\$37,500 was raised by Boustead Projects for this initiative.



## CSR Statement



While Boustead Projects does not have a formal Corporate Social Responsibility (CSR) policy statement, we are committed to community development, and one of our long-term objectives as a company is to make a positive impact economically, environmentally and socially on the world. We are proud to share in the enduring heritage of the Boustead Group under Boustead Singapore Limited, which since its establishment in ca. 1828 has contributed almost two centuries of progress and holds the longstanding position as Singapore's oldest continuous organisation – a practical and symbolic reflection of longevity.

We are known for our advocacy and leadership efforts in the building environment sector where we operate in through our Green and Gracious Builder programme and our bizSAFE Mentorship, and our philanthropic activities include having regularly raised funds for various charities in Singapore through our annual Lunar 7th Month Charity Dinner event.

In 2018, we formally inaugurated our 'Boustead Cares' Community Partnership Programme with NECDC, and have since raised S\$142,028 in support of NECDC's community activities and a further sum of \$37,500 in support of SAMH's art community project. With an intention of going beyond fundraising efforts, our CSR events with NECDC generally also involve volunteers from our company contributing their time and efforts towards the CSR events organised for beneficiaries.





## About



### About Singapore Association for Mental Health (SAMH)

Established in 1968, the Singapore Association for Mental Health (SAMH) is a non-profit and non-government social service agency that provides a comprehensive range of mental health services, which include rehabilitative, outreach and creative services, to the community in Singapore. SAMH aims to reintegrate persons with mental health issues back into society through community-based mental health programmes and services that provide rehabilitative care for these individuals, and support for their families and caregivers. With a vision to promote mental wellness for all, SAMH is committed to improve the lives of and promote acceptance and respect for persons with mental health issues, as well as improve the mental resilience of the community. In 2018, SAMH celebrated its 50th anniversary and pledged its commitment to step up efforts to address the growing challenge of mental health issues among the people, young and old.

For more information, please visit:

<https://www.samhealth.org.sg/>

### About SAMH Creative Services

Arts, sports and the outdoors serve as outlets for healthy self-expression. Through its two centres, SAMH Creative SAY! and SAMH Creative MINDSET Hub, SAMH organises creative programmes that deliver skill-based lessons to support the mental and emotional well-being of persons in recovery, as well as for the community at large. SAMH Creative SAY!, which stands for Sports, Arts and Youths, reinforces SAMH's belief that youths should have a "SAY!" in their lives by helping to spark conversations, promote mental well-being and cultivate mental resilience among youths. SAMH Creative MINDSET Hub, offers programmes and activities, both online and on-site that cater to all age groups.

5

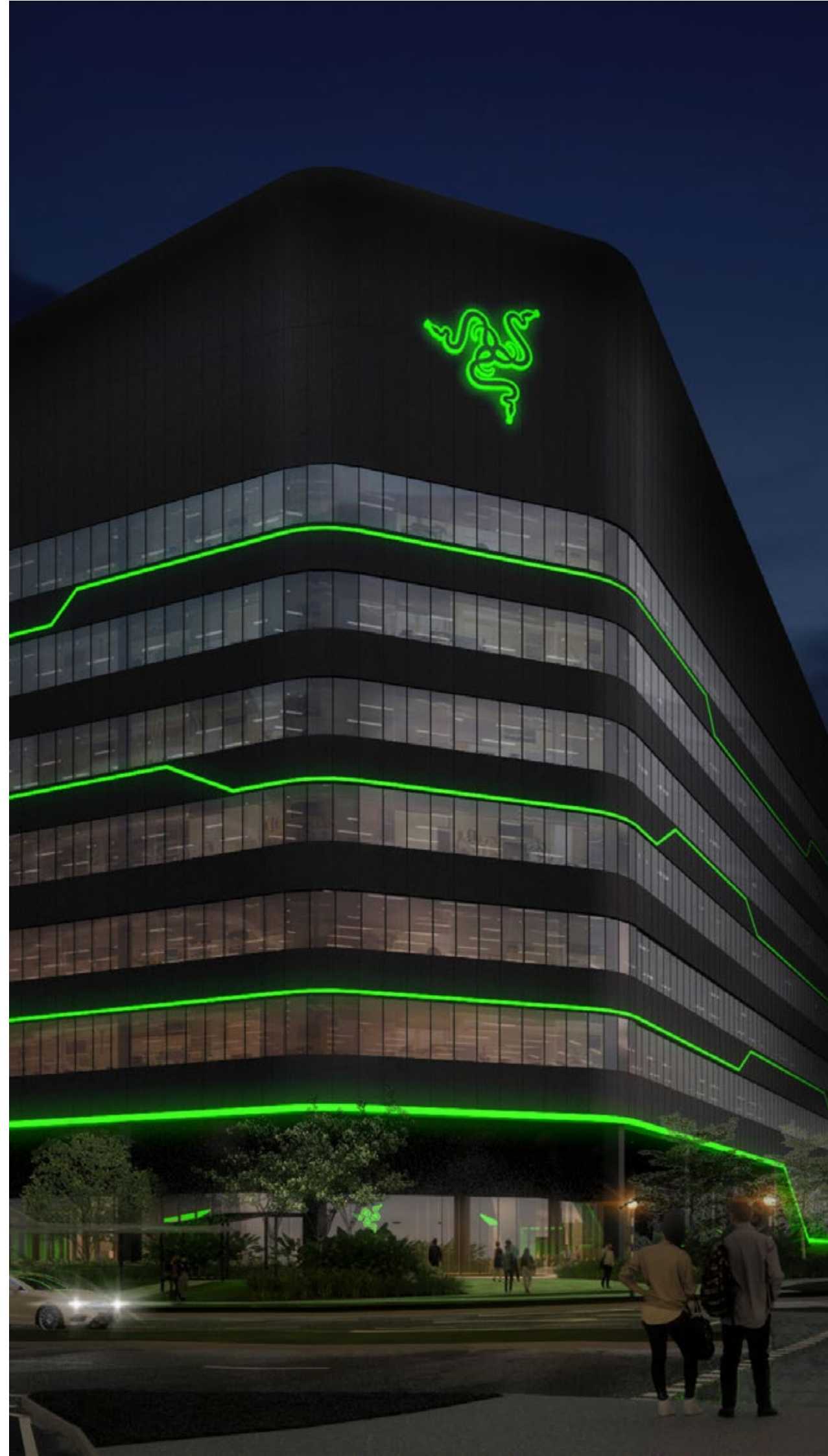
**Buildings**  
**Artists**  
**Paintings**  
**Reflections**

---



# Razer Southeast Asia Headquarters

“Razer SEA HQ”



A smart business park development in JTC one-north that will house the Southeast Asia headquarters of HKEX-listed gaming hardware and fintech firm Razer Inc. The S\$100 million building is expected to have approximately 19,300 square metres of office space, research and development labs, and design studios across seven storeys. The building is developed by Snakepit-BP LLP, a joint venture between Boustead Projects and a company majority-owned by Razer's co-founder and CEO. Razer's iconic logo is prominently displayed on the building façade, and at night, the building is lit with strips of LED lighting in “signature Razer green”, simulating a central processing unit in operation.



#### About the Artist

C.W.K. has been participating in art programmes with SAMH Creative Services since 2013. He enjoys painting in the Pointillism technique and working with oil and acrylic paints. His favourite subject matters are buildings, houses, car models and sea creatures.

#### Artwork Description

This is a night scene of the building of Razer SEA HQ. I painted lighting emanating from the inside of the building as day turns into night. I added in the company's logo even though it is not seen from this view. I liked that I painted the different tones of green by myself.





# Surbana Jurong Campus



A sprawling new campus under development in the up-and-coming Jurong Innovation District that will house the global headquarters of Surbana Jurong Group, a global urban, infrastructure and managed services consulting firm. Designed by Safdie Surbana Jurong, a collaboration between Safdie Architects and Surbana Jurong established in 2017, the Campus will serve to demonstrate what a sustainable, people-centric and future-ready workplace would look like. Created by renowned architect Mr Moshe Safdie, the design of the new headquarters embodies the character of Singapore as the Garden City by integrating the structure harmoniously with the natural landscape.

Situated on a previously undeveloped greenfield site, the Campus will push the boundaries of sustainable design in both construction and operation. The Campus is the first large-scale industrial development in Singapore to be awarded the Green Mark Platinum – Super Low Energy rating. The Campus utilises solar photovoltaic technology which will yield around 340MWh of renewable energy annually, and integrates features such as rain gardens and bio-swale to enhance water sustainability. It also boasts many other green technologies, including smart lighting control, underfloor air-distribution system, and predictive smart building control systems such as live energy and water management dashboards.



#### About the Artist

Xin Yi loves fine arts, especially painting. Her favourite painting medium is oil and she also enjoys painting in acrylic, watercolour and doing Chinese calligraphy.

#### Artwork Description

This is a painting of the Surbana Jurong Campus building, which is quite complicated for me to paint. My favourite part was painting the sky and drawing the shapes of the building. Thank you to the staff and other artists for guiding and encouraging me. I enjoyed meeting and working with the other artists weekly as we work on our paintings.





# ALICE @Mediapolis



Located in Mediapolis, one-north, a 12-floor landmark development that was developed by the Boustead Development Partnership and is Boustead Projects' largest development to date. It offers a mix of business park and office space designed for both MNCs and fast-growing companies, primarily in the info-communications, media and technology industries. Singapore's first truly-smart business park development features a bespoke mobile app specifically designed for tenants, visitors and the building's facility managers, one that is integrated with a smart building management system to automate processes and optimise building operations and facility management. It received its BCA Green Mark Platinum rating in 2018 for its outstanding eco-sustainable features, including sub-metering systems that can be accessed real-time on an innovative mobile app for individual tenants to track their utilities usage. In January 2021, UOB extended a green loan of about S\$130 million to refinance the development.





#### About the Artist

K.L. Guoyang loves playing with Lego, and observing colours and structures since he was young. He has a strong passion in buildings, cityscapes and skylines. He holds a Diploma in Architecture from Singapore Polytechnic.

As he finds detail drawing relaxing for him, most of his works depict various forms of detailed building landscapes in pen. Despite finding it challenging to work with paint, he constantly reminds himself to slow down and do it at his own pace. K.L. believes the process helps him to build confidence and he feels a great sense of achievement whenever he completes an art piece.

#### Artwork Description

I added lots of flowers to the landscape and façade of the building. The flowers are blossoming and fill the air with an attractive fragrance. I also added a coconut tree to make it more visually interesting. I like painting the details of the building as it relieves my stress and allows me to express my emotions. It is not easy to paint on a big canvas like this, but it allows me to expand my creativity and learn new skills.



# Wilmar HQ



A 7-floor, 2-basement business park development by Wilmar International Limited located at one-north intended to serve as Wilmar's headquarters. A variety of sustainable design strategies were adopted for the development. A through block link channels natural ventilation. Water features are also present throughout the development to promote evaporative cooling via natural ventilation. The façade was designed to promote maximum natural daylight to lower the energy consumption needed for artificial lighting, while deep shading fins are used to prevent direct sun glare to reduce heat gain. Lushly landscaped terraces insulate the roof levels, while water features on the roof encourage evaporative cooling which reduce heat load.

Wilmar International Limited, founded in 1991 and headquartered in Singapore, is Asia's leading agribusiness group and ranked amongst the largest listed companies by market capitalisation on the Singapore Exchange.



#### About the Artist

My name is Sabrina and am close to 20 years old. I was diagnosed with anxiety and depression. I love art and sometimes I think there is nothing as delightful as drawing. Art has given me the power to anchor my unstable thoughts.

#### Artwork Description

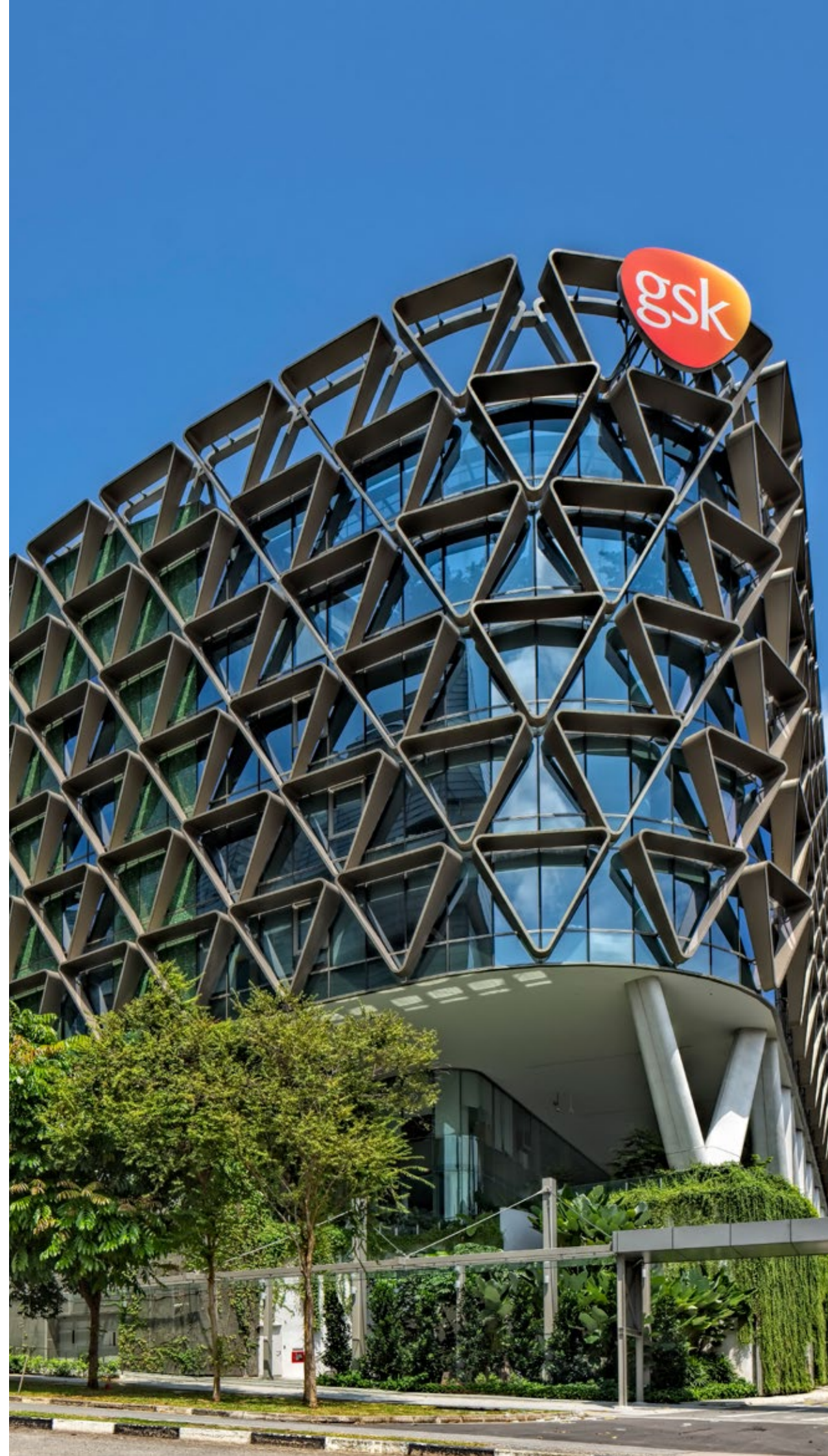
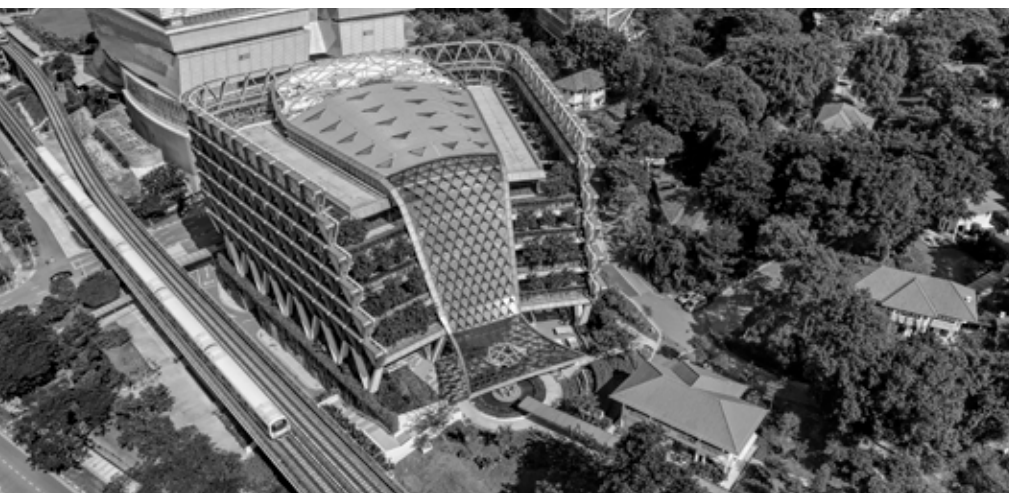
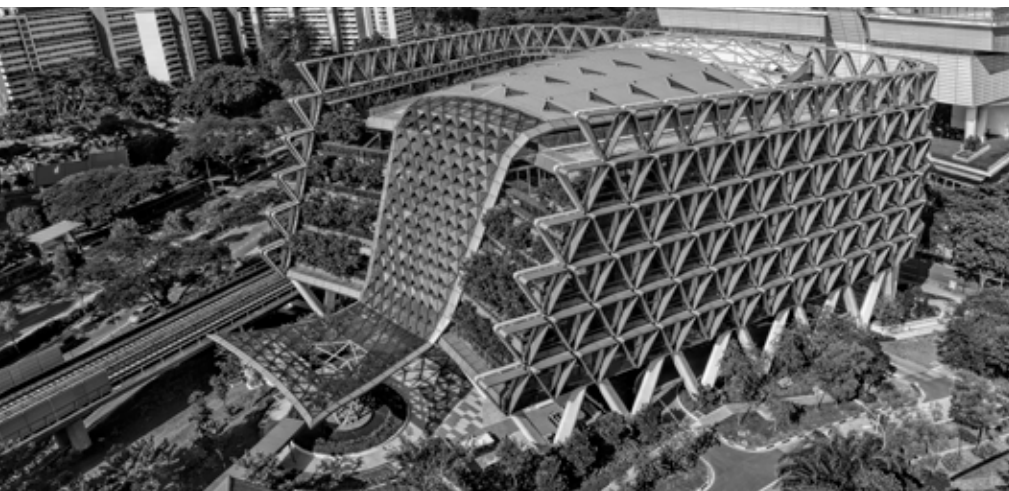
I chose to paint this building because it didn't look difficult to paint. This is my first time painting a building and it took me a long time to get the proportions and colours the way I wanted it to be.





# GSK Asia House

---



First design-build-and-lease project undertaken by Boustead Projects in the one-north region, and first business park project undertaken by the Boustead Development Partnership. Located at 23 Rochester Park, this iconic business park building which is in close proximity to Buona Vista MRT is actually part of a larger development that also includes three conservation bungalows located at 20-22 Rochester Park. GlaxoSmithKline (GSK) Asia House serves as the regional headquarters of British pharmaceutical giant GSK's Emerging Markets and Asia Pacific pharmaceuticals and consumer healthcare businesses, the global headquarters of GSK's Classic and Established Products group, and also houses GSK's commercial operations in Singapore. It also incorporates GSK's first shopper science lab in Asia on the ground floor.

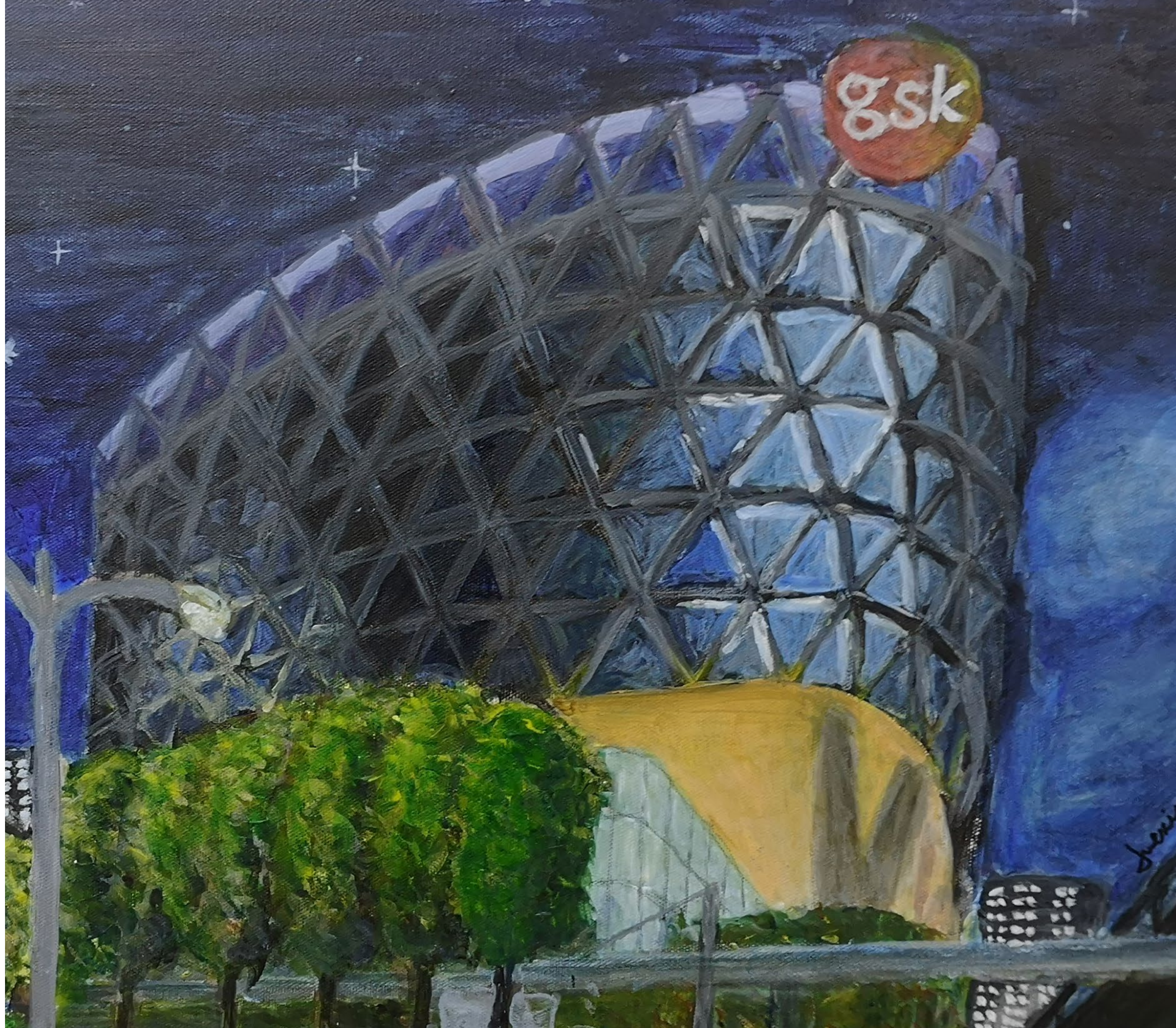


#### About the Artist

Jue Xin likes art and the therapeutic effects it brings to her. She has been interested in art since a young age. Her favourite subjects are still life, buildings and portraits of her family. She hopes to be a professional artist and an art teacher one day.

#### Artwork Description

The night sky here is almost purple, which I feel gives a nice impression. Due to our cityscape, we are only able to see a few stars here. I painted in the moon and the stars, which are like the guiding angels of Singapore, our home.





*I learnt to draw the building from scratch and painted it myself using the right tone of colours; I enjoyed learning to paint the different tones of trees!*  
– C.W.K.



*I learnt that I like the outdoors, both night and day. I think the night sky in Singapore truly reflects home and its beauty.*  
– Jue Xin

*The painting process increased my confidence as I observe how to paint and learn from one another.*  
– K.L. Guoyang



*Initially, I was worried about whether my painting will be presentable, but it turned out to be nicer than I thought it would be and this made me happy.*  
– Jue Xin



---

*Each of the artists reflected their emotions and character into the buildings through their painting.*

**– Winson (Boustead)**



*The process of working with the clients of SAMH taught me to trust in others to complete things in their own pace and time.*

**– Hui Lian (Curator)**



*For three months, we would meet weekly to work on their paintings together. Despite this being the first time for some of our beneficiaries to draw and paint buildings, they persevered and helped one another through the adversities, building friendships along the way. I'm very proud of what each one of them has produced at the end of the project!*

**– Clara (SAMH)**

---





#### **Acknowledgements**

SAMH Creative MINDSET Hub, on behalf of Singapore Association for Mental Health (SAMH), would like to express our sincere appreciation to Boustead Projects for this opportunity to collaborate on this meaningful project, "Building Connections through Art". Secondly, we would like to thank the curator, Lee Hui Lian (FARM) and facilitators Clara Chong, Joline Chan and Eugene Yeo (SAMH) who provided their guidance and time to the artists. Thirdly, to the artists, our beneficiaries, for their commitment and passion in sharing a part of their creative pursuit. Last but not least, to whoever is reading this, we hope you can take time to appreciate the fruits of their creation.

*Art washes  
away from the  
soul the dust of  
everyday life.*

**– Pablo Picasso**

#### **Designed by**

Humankind Design

[www.humankind.design](http://www.humankind.design)



